

AVALON, CALIFORNIA

AL-6368 (FAA)

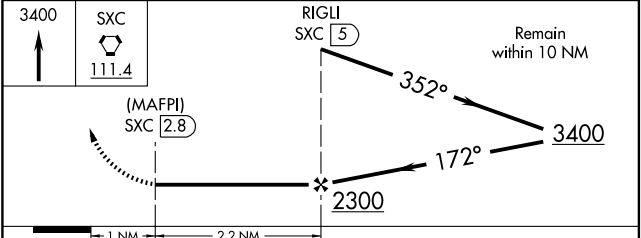
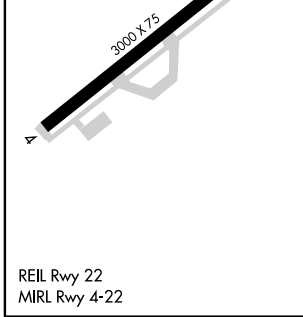
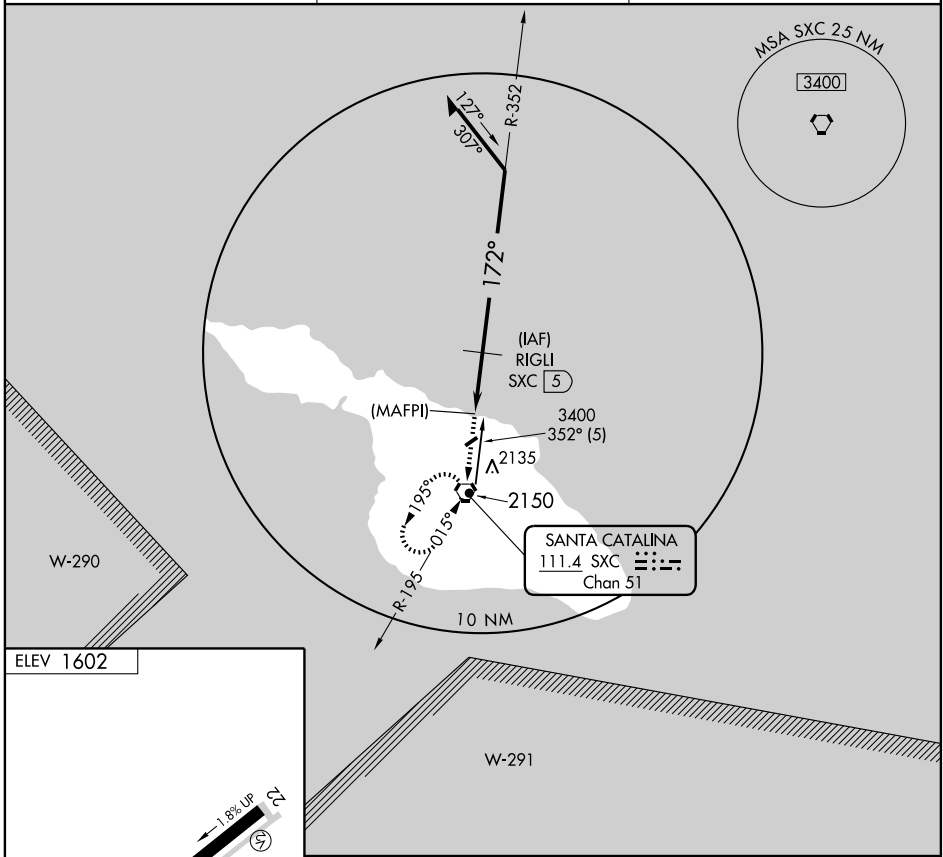
VORTAC SXC 111.4 Chan 51	APP CRS 172°	Rwy Idg TDZE Apt Elev 1602	N/A N/A
--	------------------------	--	--------------------------

VOR/DME or GPS-B

AVALON/ CATALINA (AVX)

NA Circling southeast runway 4-22 not authorized.	MISSED APPROACH: Climb to 3400 direct SXC VORTAC and hold.
--	--

ASOS 120.675	SOCAL APP CON 127.4 323.275	UNICOM 122.7 (CTAF)
------------------------	---------------------------------------	-------------------------------



CATEGORY	A	B	C	D
CIRCLING	2220-1	618 (700-1)	NA	

AVALON, CALIFORNIA
Amdt 2B 09295

33°24'N - 118°25'W

VOR/DME or GPS-B

AVALON/ CATALINA (AVX)

SW-3, 12 JAN 2012 to 09 FEB 2012

SW-3, 12 JAN 2012 to 09 FEB 2012